

GELATINE SPONGE

roeko



# SILVER IONS IN ACTION

## Gelatamp

- For the prophylaxis of wound infections and secondary haemorrhaging
- The only gelatine sponge with colloidal silver
- Haemostatic and antibacterial

 COLTENE

# SILVER WINS

*Gelatamp* is a gelatine sponge for the prophylaxis of wound infections and secondary haemorrhage following extractions. It contains colloidal silver and is thus clearly distinguished from mere gelatine sponges. Owing to the silver, *Gelatamp* exerts a broad antibacterial effect over the entire resorption period. The silver also gives *Gelatamp* its specific brown colour. This immediately signals that this sponge is worth its weight in gold.



- Fast initial haemostasis
- Stabilisation of the coagulum
- Broad antibacterial effect due to colloidal silver
- Complete absorption

## INDICATION

*Gelatamp* gelatine sponges are used to treat wound cavities and sockets following extraction.

## CLINICAL ADVANTAGES

Rapid initial haemostasis following extractions is an important step in initiating wound healing. The haemostatic process forms a coagulum which is the decisive link to the resulting granulation tissue which finally replaces the coagulum.

Disturbances in wound healing often occur if the coagulum is not formed, a formed coagulum is destroyed or if it is lost due to inappropriate post-operative patient behaviour. The use of *Gelatamp* counteracts these influencing factors in various ways and has been proven to reduce disturbances in wound healing.

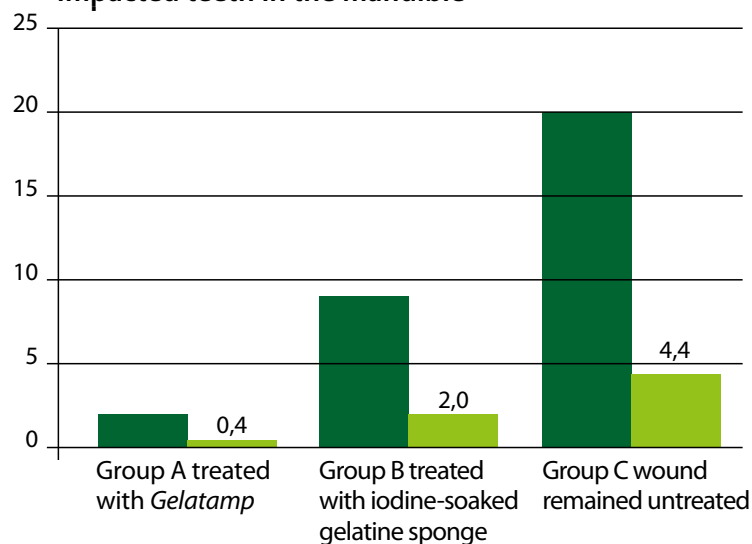


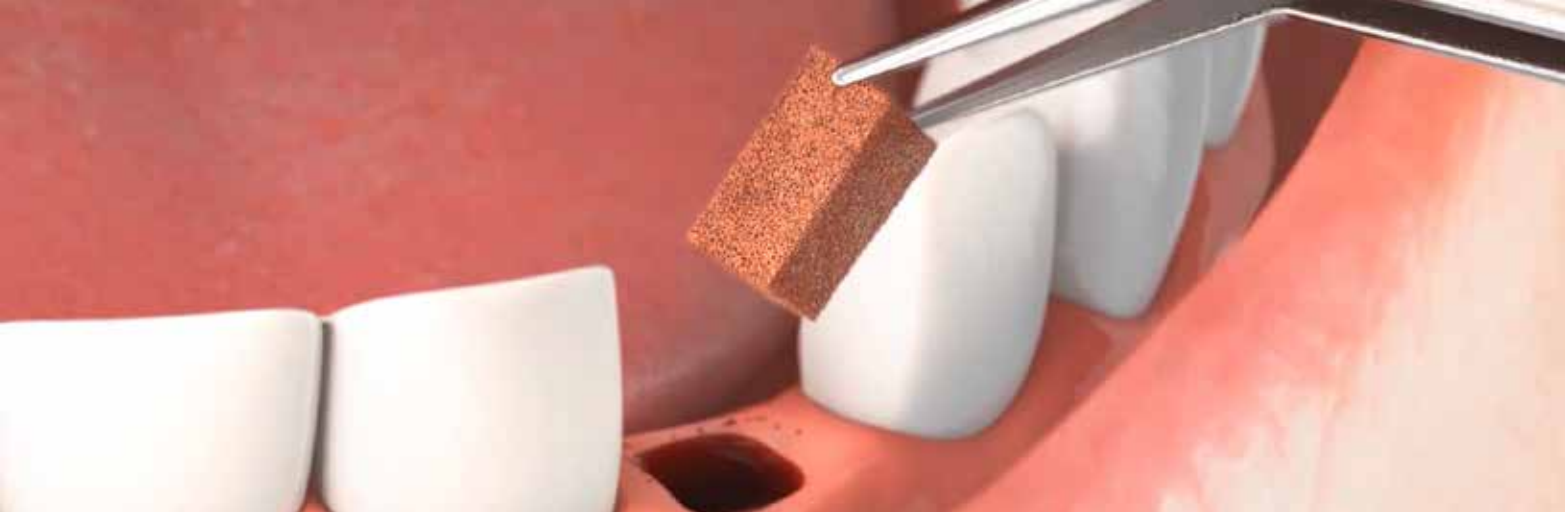
■ Number of cases of dry socket absolute (n)

■ Number of cases of dry socket in per cent (%)

Presentation based on data in Wang YZ, et.al.: Use of „*Gelatamp*“ colloidal silver gelatine sponge to prevent dry socket after extracting mandibular impacted teeth, Shanghai Kou Qiang Yi Xue. 2013 Feb;22(1):108-10.

### Occurrence of dry socket following extraction of impacted teeth in the mandible





## MODE OF ACTION

*Gelatamp* supports rapid haemostasis. The sponge absorbs a multiple of its own weight in blood, fills the wound cavity and stabilises the blood coagulum. The sponge structure enhances the aggregation of thrombocytes and thus haemostasis. *Gelatamp* fits tightly to its surroundings and prevents the formation of gaps and secondary cavities which could occur through contraction of the blood coagulum without *Gelatamp*. The ingress of burdened saliva is reduced, and thus the risk of wound infections. In addition, the silver ions of the colloidal silver in the sponge are activated.  $Ag^+$  ions are highly reactive in a moist environment and counteract the survival or multiplication of bacteria in numerous ways. As silver is bound in the gelatine, it is not washed out, but released successively when the sponge is resorbed. The difference is the depot effect of *Gelatamp* – the antibacterial effect of the gelatine sponge acts over the entire resorption

period and thus effectively prevents wound infections. The silver in *Gelatamp* acts locally and not systemically, resulting in good tolerability.

## APPLICATION

*Gelatamp* is applied immediately after the wound cavity has filled with blood. To maintain its full absorbing capacity, the sponge is to be applied dry into the wound and should not be compressed. The sponge will fill completely with blood and immediately promotes the haemostatic process.

Treatment of the alveolus is provided by placing the sponge, there is no need for further irrigation and, if required, it can be sutured.

The antibacterial effect of the silver in *Gelatamp* has been confirmed in a microbiological burden test.

Reduction in pathogens with *Gelatamp* ►

- ◆ E. coli
- Ps. aeruginosa
- ▲ Staph. aureus
- ◆ Candida albicans
- ▲ Aspergillus niger

Microbiological burden test conducted by Labor L+S GmbH, Bad Bocklet, 1992



## MODE OF ACTION

1.

### **Sponge absorbs the blood in the wound**

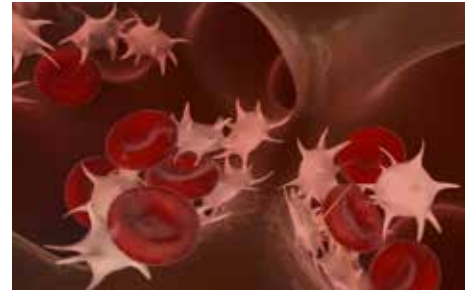
with 55-75-times its own weight without expanding. No unpleasant feeling of pressure in the wound.



2.

### **Thrombocyte aggregation**

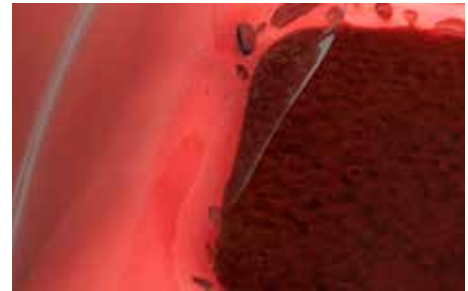
The sponge structure enhances the aggregation of blood platelets and promotes haemostasis.



3.

### **Stabilisation of coagulum**

Contraction of the coagulum is prevented, and thus the occurrence of secondary cavities or gaps. Prevents disturbances to wound healing.



4.

### **Broad antimicrobial depot effect**

Silver ions are released throughout the entire absorption period. Silver is effective against a broad spectrum of bacteria.



5.

### **Full resorption**

within 4 weeks, perfectly adapted to the healing period. Placement of the sponge is the final treatment of the wound.



LINK TO THE GELATAMP  
PRODUCT VIDEO



[youtu.be/UGcyNN9CIm0](https://youtu.be/UGcyNN9CIm0)

## USER TESTIMONIALS

«Above all the haemostatic and antibacterial depot effect of this product have convinced me clinically. *Gelatamp* is an absolutely safe companion in my daily dental practice routine.»

*Dr. Friederike Listander, dentist, Germany*

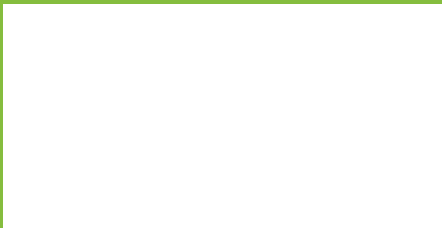
«I was one of the first to assess *Gelatamp* in China. I continue using *Gelatamp* because of its haemostatic and antibacterial effect. It is cost-efficient and reliable. I am happy to recommend it.»

*Professor Wang Enbo, Director of the University Clinic for Oral and Maxillofacial Surgery (OMS), Peking*

## ORDER INFORMATION

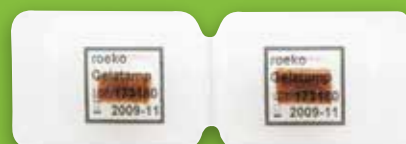
Item	Contents	Dimensions	REF
<b>Box</b>	20 pcs.	14 × 7 × 7 mm	274 002
	50 pcs.	14 × 7 × 7 mm	274 007
<b>Blister Pack</b>	20 pcs.	14 × 7 × 7 mm	274 008

© 2017 COLTENE/WHALEDENT AG – [www.coltene.com](http://www.coltene.com)



**COLTENE/WHALEDENT LTD.**  
The President Suite  
Kendal House, Victoria Way  
Burgess Hill, West Sussex  
RH15 9NF / UK  
T +44 1444 235486  
F +44 1444 870640  
[info.uk@coltene.com](mailto:info.uk@coltene.com)

**COLTENE/WHALEDENT  
GmbH + Co. KG**  
Raiffeisenstraße 30  
89129 Langenau / Germany  
T +49 7345 805 0  
F +49 7345 805 201  
[info.de@coltene.com](mailto:info.de@coltene.com)



 **COLTENE**